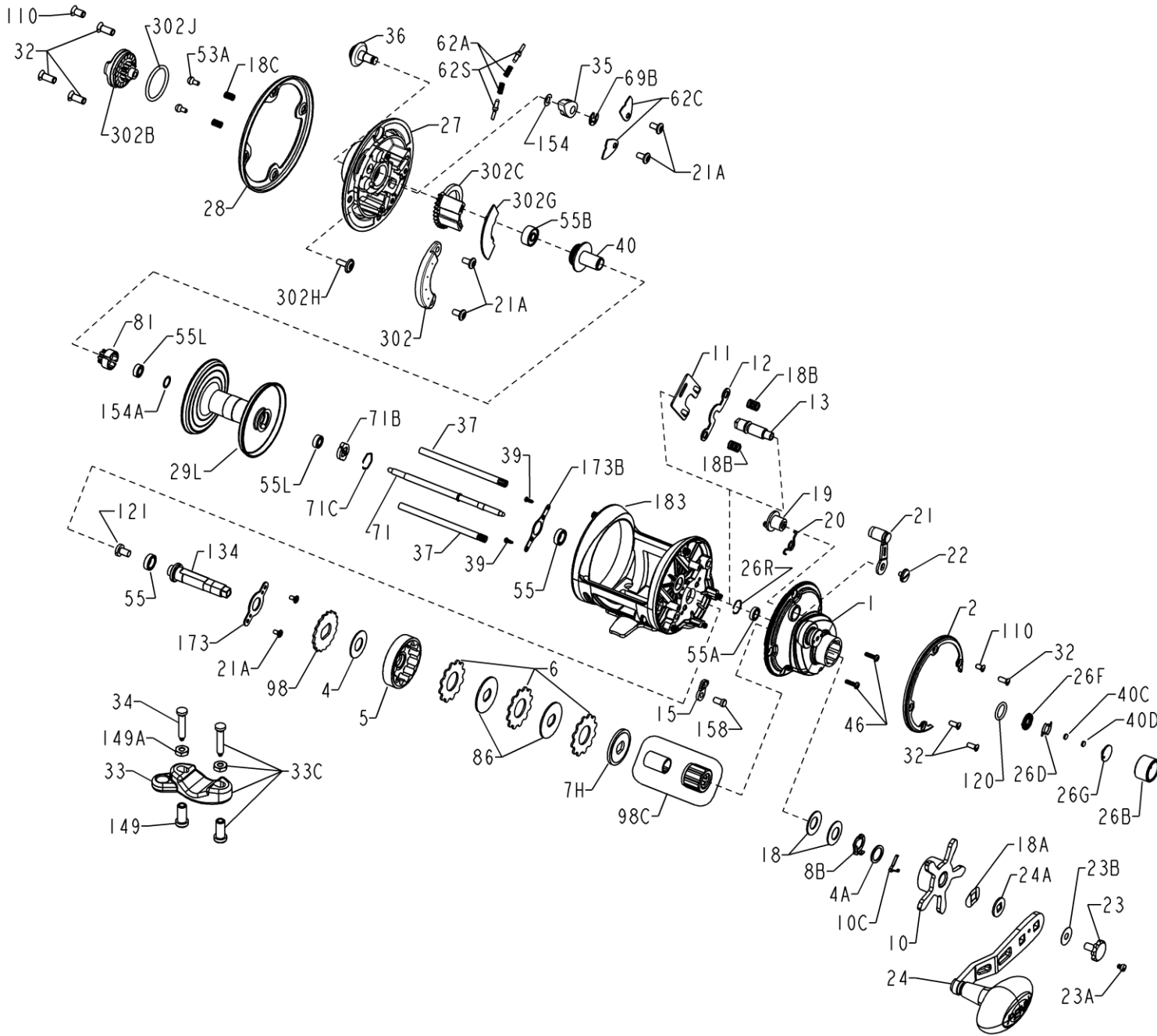




# PARTS LIST FOR MODEL 535MAG2

REELASM NO. 1291102



KEY NO.	ORDERING PART NO.	PENN STYLE NO.	DESCRIPTION
1	1276610	1-SQLSD	Right Side Plate
2	1276611	2-SQLSD	Ring, Right Side Plate
4	1180755	4-60	Washer, Graphite, LG
4A	1180770	4-300T	Washer, Graphite, SM
5	1276612	5-SQLSD	Main Gear
6	1237037	6-TRQ40	Washer, Tab Drag (3 Req)
7H	1276613	7H-SQLSD	Heavy Metal Drag Washer
8B	1214525	8-525MAG2	Spring Retainer
10	1214526	10-525MAG2	Drag Star
10C	1214527	10C-525MAG2	Detent Spring
11	1276614	11-SQLSD	Eccentric Jack
12	1214649	12-525MAG2	Pinion Yoke
13	1276615	13-SQLSD	Pinion
15	1229374	15-TRQ40	Dog Asm
18	1214651	18-525MAG2	Spring Washer (2 Req)
18A	1188714	18A-20	Keyed Spring Washer
18B	1181624	18-525	Spring (2 Req)
18C	1181632	18C-15KG	Spring (2 Req)
19	1276616	19-SQLSD	Eccentric
20	1181785	20-525	Spring
21	1276617	21-SQLSD	Eccentric Lever
21A	1214652	21A-420G	Screw (6 Req)
22	1214705	22-525MAG2	Eccentric Screw
23	1208117	23-FTH20LW	Handle Screw
23A	1188717	23A-20	Handle Lock Screw
23B	1207784	23B-20	Handle Screw Washer
24	1276618	24-SQLSD	Handle Assembly
24A	1188715	24A-20	Handle Thrust Washer
26B	1214706	26B-525MAG2	Cap, Tension Control
26D	1125769	26D-525MAG2	Click Spring
26F	1125768	26F-525MAG2	Click Plate "Inner"
26G	1125772	26G-525MAG2	Click Plate "Outer"
26R	1214654	26R-525MAG2	Retaining Ring
27	1314488	27-535MAG2	Left Side Plate
28	1276622	28-SQLSD	Ring, Left Side
29L	1276623	29L-SQL25N	Spool
32	1182722	32-310	Screw (6 Req)
33	1182754	33-113	Rod Clamp
33C	1276626	33C-SQLSD	Kit, Rod Clamp
34	1182788	34-45	Screw (2 Req)
35	1214660	35-525MAG2	Tongue, Click
36	1214661	36-525MAG2	Button, Click
37	1276627	37-SQL25N	Post, Frame(2 Req)
39	1183220	39-525	Screw (2 Req)
40	1214664	40-525MAG2	Bushing, Left Side Spindle
40C	1208115	40C-525MAG2	Washer, Metal Thrust
40D	1125771	40D-525MAG2	Washer, Rubber Thrust
46	1183567	46-4300	Screw (2 Req)
53A	1183846	53A-5600	Pin, Click (2 Req)
55	1214665	55-525MAG2	Bearing, Ball (2 Req)
55A	1214666	55A-525MAG2	Bearing, Ball
55B	1183880	55-113H	Bearing, Ball
55L	1192031	55L-965	Bearing, Ball (2 Req)
62A	1184033	62A-310	Spring (2 Req)
62C	1184041	62C-321LH	Cover, Click Spring (2 Req)
62S	1192075	62S-310	Pin, Click (2 Req)
69B	1184129	69B-600	Ring, Retaining
71	1276630	71-SQL25N	Spindle
71B	1230226	71B-TRQ40	Spool Driver
71C	1230227	71C-TRQ40	Retaining Ring
81	1184210	81-525MAG	Ratchet, Click
86	1184251	86-49L	Washer, Key (2 Req)
98	1230412	98-TRQ40	Ratchet, Anti Reverse
98C	1216190	98C-525MAG2	Clutch/Sleeve Assembly
110	1184436	110-50	Screw (2 Req)
120	1184522	120-113H	O-Ring
121	1276633	121-SQLSD	Screw
134	1276634	134-SQLSD	Stud, Gear
149	1184702	149-45	Nut, Rod Clamp (2 Req)
149A	1184706	149-200	Nut, Hex (2 Req)
154	1184721	154-117	Shim, Click
154A	1276694	154-SQLSD	Shim, Spool
158	1276695	158-SQLSD	Dog Pin
173	1214677	173-525MAG2	Retainer, Bearing
173B	1214678	173B-525MAG2	Retainer, Bearing
183	1315189	183-535MAG2	Frame
302	1315190	302-535MAG2	Assembly, Magnet Housing
302B	1214682	302B-525MAG2	Dial, Brake Adjustment
302C	1214683	302C-525MAG2	Carrier, Magnet Shield
302G	1315192	302G-535MAG2	Shield, Adjustable Magnet
302H	1214685	302H-525MAG2	Screw
302J	1214686	302J-525MAG2	O-Ring